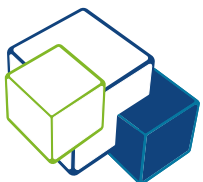




# Data Centre Solutions

Expertly Engineered



**Workspace**  
Technology Limited  
Data Centre Solutions Expertly Engineered

[workspace-technology.com](http://workspace-technology.com)  
[mobiledatacentre.com](http://mobiledatacentre.com)



## Data Centre Solutions

**Whether your requirement is for an on or off-premise data centre infrastructure, Workspace Technology provides a range of modular solutions, including new build, refurbishment of existing structures, prefabricated buildings, containers and pods or colocation within our own colocation data centre facility.**

The application of our EcoDesign™ principles contributes to the sustainable data centre construction and represents our commitment in helping our clients reduce their carbon footprint through the deployment of energy efficient technology and design. We will deliver your data centre using world-class skills and capabilities, reducing costs, accelerating deployment and providing a culture of innovation that will deliver tangible commercial and operational advantages for your business. Our innovative solutions will provide your organisation with substantial commercial and long-term operational benefits, with built-in future proofing to manage new compute, storage and networking technology.

By opting to use Workspace Technology clients can benefit from our Pentagon 360 offering, a unique service providing Consultancy, Design, Build, Maintenance and Support services 100% in-house, ensuring that your project is in safe hands during the lifetime of your data centre infrastructure.

**Workspace Technology has simplified the architecture from which we deliver data centre infrastructure and technology.**



### Construction

We create 'technical space' through a range of traditional construction and modular fabrication systems. We will undertake all internal and external construction including partition systems, ceiling grids, raised access floors, final decoration and finishes.





### Cooling & Airflow

**Workspace Technology offers a wide range of cooling technology to support a variety of applications and environments.**

Cooling systems include; Perimeter Computer Room Air Conditioning (CRAC), InRow, On-Rack/Rear Door and overhead cooling systems. Our award-winning innovative Freecool® Evaporative Free Air Cooling delivers low energy cooling. We also provide an extensive range of aisle containment and airflow management technology helping maintain effective and efficient airflow.



### Fire Protection

**Fire protection provides essential security against fire. Simply put, if an environment is incapable of breeding a fire then there will be no threat of fire damage to the facility.**

Workspace Technology offers design and installation of detection measures and a range of environmentally friendly gaseous agents. We will undertake all electrical, room sealing, and builders' works as part of any fire suppression deployment to ensure that the system will pass the room integrity tests.

We also offer Very Early Smoke Detection Apparatus (VESDA) systems for enhanced protection, recognising early signs of possible combustion long before any fire suppression system would be activated.



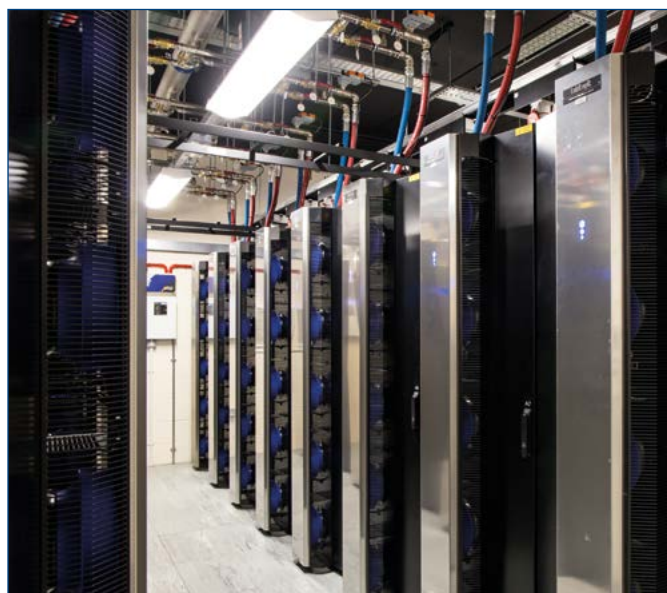
### Technical

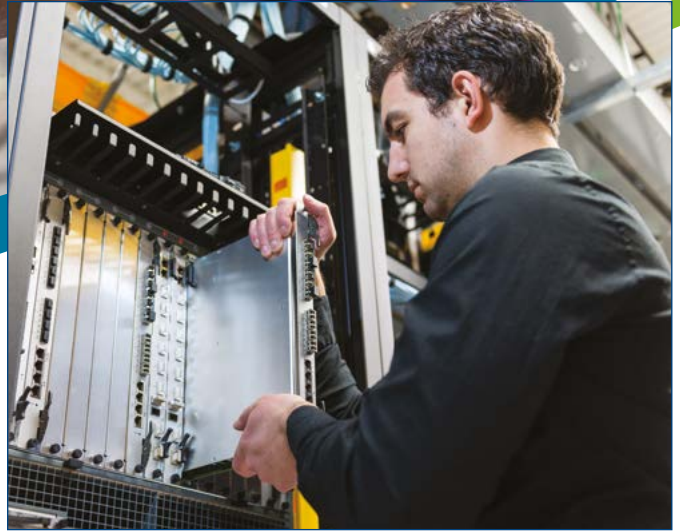
**Our technical services include structured cabling, equipment racks & accessories, security systems and related data centre technical infrastructure.**

**Cabling** - Workspace Technology is a certified cable installer of leading cable brands, designing and installing Cat5e, Cat5, Cat6A and fibre optical data centre solutions.

**Racks & Accessories** - Workspace Technology offers a wide choice of high quality enterprise class equipment racks and PDUs from a range of manufacturers including APC by Schneider Electric.

**Security** - As part of any data centre installation we provide Intruder Detection, Access Control & CCTV systems. We can offer standalone solutions or can be integrated into existing house systems dependant on client preferences.





## Engineering

**Workspace Technology designs and installs modular, resilient, 'right size' electrical infrastructure including HV, LV, PDUs, UPS systems and power generators.**

**Design** - We utilise AMTECH ProDesign ensuring designs comply with BS 7671 IEE 17<sup>th</sup> Edition. Workspace Technology is an ECA certified Electrical Contractor.

**Distribution** - We install power distribution, switchgear and associated electrical infrastructure to support Tier ratings, design capacity and system availability.

**UPS Systems** - Workspace Technology supplies a wide range of Schneider Electric and Riello traditional, rack mount and modular UPS systems to meet client demands.

**Power Generation** - Workspace Technology delivers engineering excellence and technically advanced power generation solutions. Our comprehensive range of diesel generator sets deliver power solutions for data centre, commercial and industrial applications.



## Management

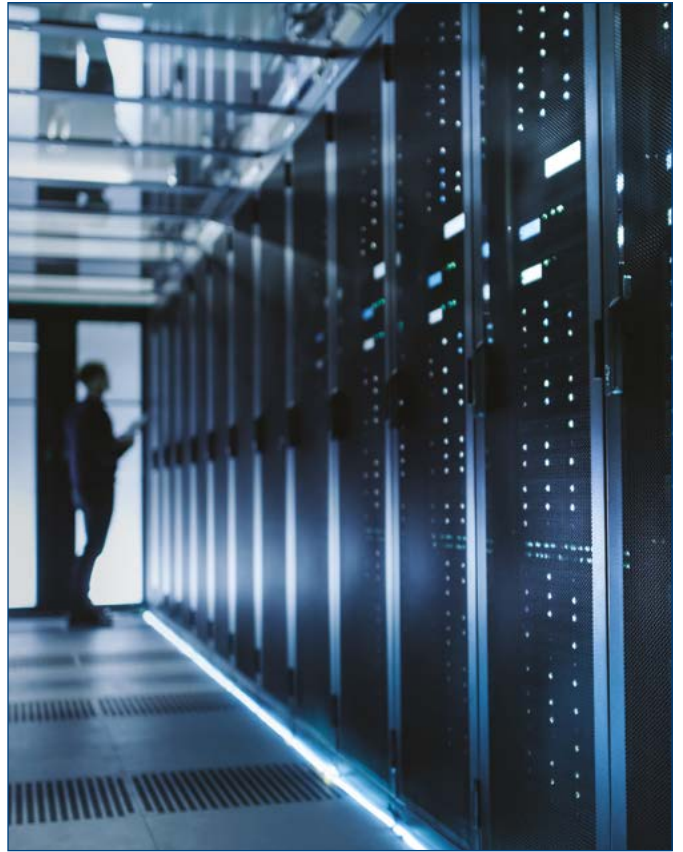
**Workspace Technology provides a wide range of mission critical management and monitoring solutions which are scalable to meet demands from small communications rooms, server rooms to large scale multi-site data centre deployments.**

**Environmental Monitoring** - We provide video surveillance, temperature, humidity, door contact, VFC/dry contact, vibration, smoke, 2-way audio, spot leak and rope leak premium security and monitoring technology through APC by Schneider Electric's leading range of NetBotz products.

**Data Centre Expert** - Workspace Technology provides clients with proactive data centre management through APC by Schneider Electric's StruxureWare Data Centre Expert (DCE) which shares a centralised database, enabling design, real-time monitoring, inventory management and planning through predictive simulation.

**EcoMeasure™** - A range of sophisticated data centre energy monitoring and optimisation services are delivered through Schneider Electric's Power Monitoring Expert (PME) technology.

**Data Centre Infrastructure Management (DCIM)** - We implement DCIM solutions based on Schneider Electric's award-winning StruxureWare Data Centre Infrastructure Management software suite. This DCIM software provides a unified view and analysis of complex IT physical data centre infrastructure. It communicates with building, enterprise and network management systems to ensure quality, gain energy and cost efficiencies whilst aiding in short and long-term planning and provisioning of data centre equipment resources.



## Other Services



### Maintenance & Support Services

When it comes to supporting your data centre infrastructure we offer a wide range of services to suit your business's demands. We are experienced and qualified to effectively support all your data centre equipment including; air-conditioning systems, chilled water systems, UPS, generators, fire suppression systems, environmental monitoring technology, DCIM and associated mission critical infrastructure.



### Technical Prefabricated Buildings

Workspace Technology offers a range of prefabricated modular and mobile buildings designed for flexible, reliable performance across various industries and applications.



### DataCube™ - Mobile Data Centre Solutions

Our DataCube™ systems are mobile, prefabricated data centers with integrated cooling, fire suppression, technical infrastructure, and management tools, built to handle demanding IT workloads.



**SecureCube®** - High-Security SCIFs and Secure Buildings - SecureCube® provides high-security buildings and SCIFs for national security, government, and corporate operations. They feature advanced physical, acoustic, RF security, access controls, and intrusion detection.



### TelcoCube™ - Telecommunications Cabins

TelcoCube™ structures support telecom applications, including Fibre Repeater & Exchange Cabins, 5G Base Stations, and equipment enclosures, ensuring reliable performance for critical infrastructure.

### Prefabricated Power & Cooling Solutions -

Workspace Technology designs pre-engineered power and cooling modules that offer efficient, scalable infrastructure for technical environments.

### Specialist Bespoke Prefabricated Solutions

- We work with clients to create customised prefabricated structures tailored to specific operational needs.



Interested in finding out more?

Call us: 0121 354 4894

Email us: [sales@workspace-technology.com](mailto:sales@workspace-technology.com)

[workspace-technology.com](http://workspace-technology.com)

[mobiledatacentre.com](http://mobiledatacentre.com)



**Workspace**  
Technology Limited

Data Centre Solutions Expertly Engineered

Reddicap Trading Estate,  
The Royal Town of Sutton Coldfield, B75 7BU

