



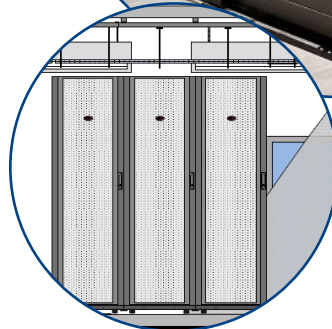
Repeatable IT Hub Rooms



Reducing the costs of NCPI through standardisation

The UK Government's plan for growth, published in 2011, highlighted the critical importance of an efficient construction industry to the UK economy.

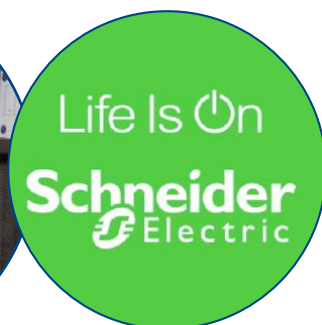
The Government Efficiency Reform Group published the Government Construction Strategy (GCS) in 2011. This requires all Government departments and devolved bodies to reduce the cost of construction by up to 15-20% by 2015. In response to this Workspace Technology have developed a series of Repeatable IT Hub Room arrangements. Using standardised components and layouts will collectively deliver, or even exceed, target cost savings.



Benefits

Key added value benefits of Workspace Technology's Repeatable Hub Room Solutions include:

- **Standardised Model** – Creation of a Core Standardised Design to suit all environments.
- **Cost Effective** – Maximising investment to reduce OPEX and CAPEX costs. Removes the cost associated with one off designs or use of consultants.
- **Energy Efficient** – Maximise IT energy efficiency and minimise carbon emissions by producing a facility which delivers industry leading Power Usage Effectiveness (PUE) levels.
- **Resilient** – Redundancy & Resilience built to ensure system availability.
- **Secure** – Physical & Electronic security built within.
- **Adaptable, Scalable & Re-Deployable** – To allow the facility to grow and expand in-line with IT demands over its entire lifetime.
- **Rapidly Deployable** – Decreases the time taken to deploy a new facility through the use of Modular Architecture.
- **Easily Maintainable** – Ease of access to services combined with the incorporation of Modular Hot Swappable Technology, all covered by an SLA service agreement to ensure operational functionality.





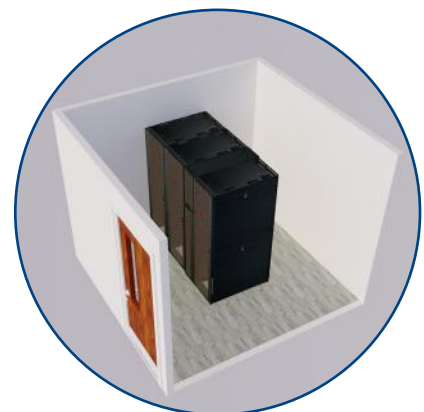
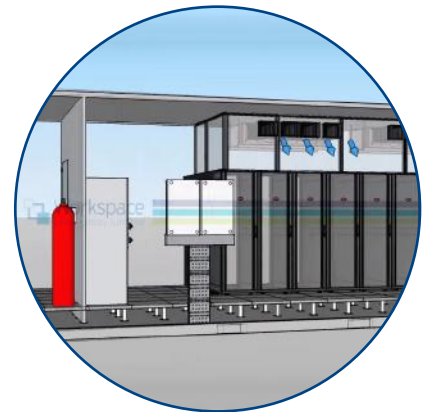
Repeatable IT Hub Room Matrix

Repeatable IT Hub Room Arrangements

The IT Hub Room Arrangements provided are based upon experience of working with IT departments and main contractors, ensuring the solutions meet technical, operational and financial requirements.

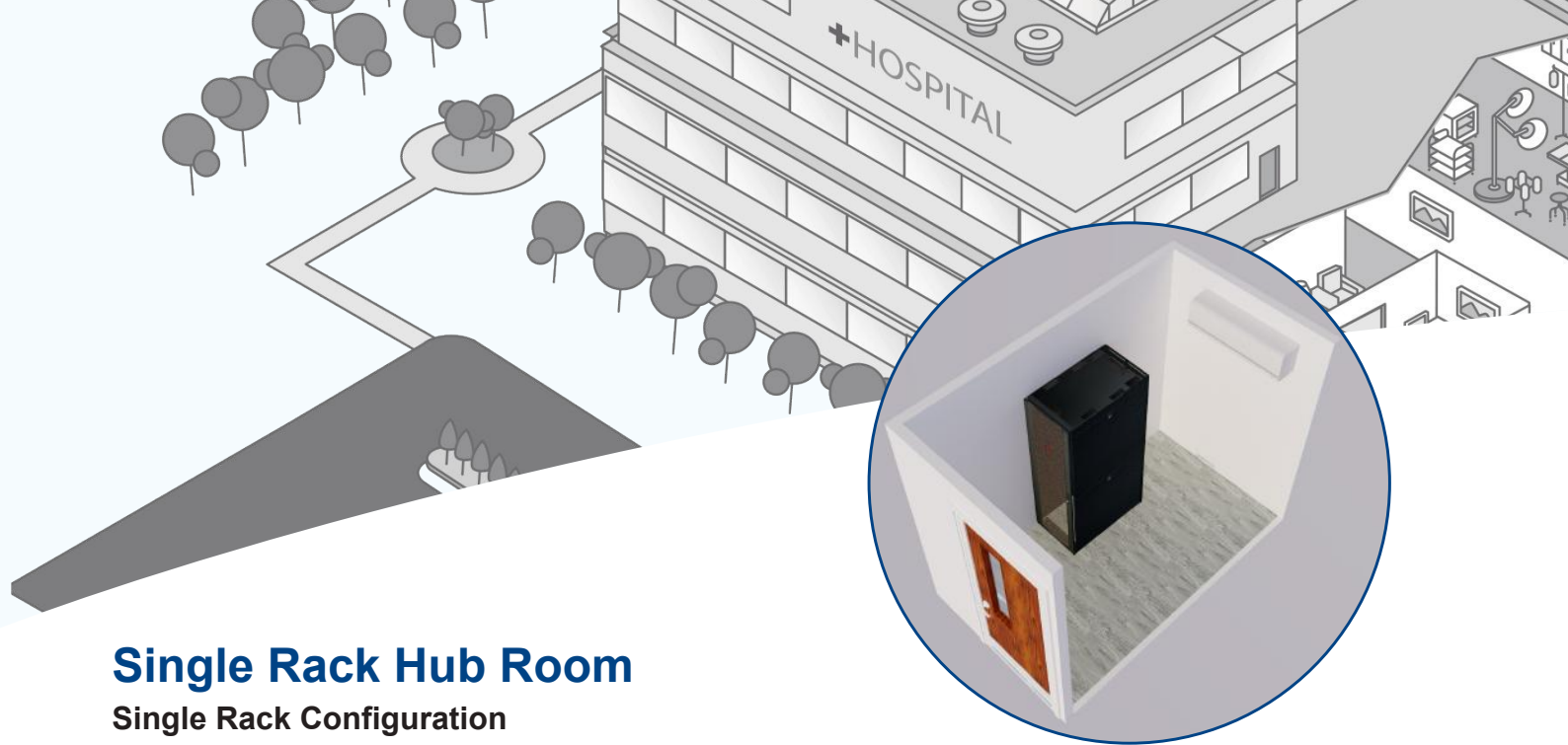
Our Repeatable IT Hub Rooms are subject to a dynamic review process, ensuring evolving industry best practice is utilised.

Our solutions are based upon Schneider Electric Technology ensuring World Class technology and support.



Configuration Options

- Single Rack
- Single Rack (Enhanced)
- Dual Rack
- Dual Rack (Enhanced)
- Triple Rack
- Triple Rack (Enhanced)



Single Rack Hub Room

Single Rack Configuration

Description

The Single Rack Hub Room is complete with a 42U rack, UPS, power distribution, environmental monitoring, cable management and cooling and is compliant to TIA492 standards.

Operational Benefits

- Conformity across all Hub Rooms
- Lowers risk of human error
- Reduced risk of downtime
- Right sized infrastructure leading to better efficiencies
- Lower MTTR in the event of failure
- All key components are networkable meaning infrastructure can be monitored remotely
- Prescribed Fault Alarm notification

Cost Benefits

- Reduced time on-site
- Efficient solution leading to lower operational costs
- No need for consultants – room is pre-designed
- One contractor to manage
- Workspace Technology takes full ownership of design and therefore removes risk from PCPS
- Carefully selected products which have low maintenance requirements



Key Features

- Pre-configured solution
- Quick deployment and installation
- Space saving solution
- Rack with vendor-neutral mounting for guaranteed compatibility with all EIA-310 compliant 19" equipment
- Line interactive UPSs (1 per rack) complete with network management card & LCD control panel
- Networkable environmental monitoring
- Carefully selected cable management accessories to ensure neat cabling within rack
- Can easily be scaled upwards should additional rack space be required
- Low risk solution

Options

Several design features may be added to the designs, depending on criticality and resilience levels required by the client.

- N+1 UPS System
- N+1 Cooling
- InRow Cooling
- Intelligent PDU Strips
- Fire Suppression
- Rack Access Control
- CCTV
- Enhanced Environmental Monitoring
- Wider and/or Deeper Racks



Single Rack Hub Room (Enhanced)

Single Rack Configuration

Description

The Enhanced Single Rack Hub Room is complete with a 42U premium rack, modular UPS, intelligent power distribution, environmental monitoring, enhanced cable management and cooling and is compliant to TIA492 standards.

Comparison Chart	Basic	Enhanced
UPS Power		
Line Interactive UPS	✓	✗
Online UPS	✗	✓
Modular UPS	✗	✓
N+1 Configuration	✗	✓
Networkable	✓	✓
Service Bypass Panel	✗	✓
Rack Mountable	✓	✓
Scalable Runtime	✓	✓
Cooling		
N+1 Arrangement	✗	✓
Networkable	✓	✓
Power Distribution Units		
Metered	✗	✓
Networkable	✗	✓
10A & 16A IEC Outlets	✓	✓
Environmental Monitoring		
Temp Sensors	✓	✓
Temp & Humidity	✓	✓
Leak Detection	✗	✓
Beacon	✓	✓
Racks		
Value Rack	✓	✗
Premium	✗	✓

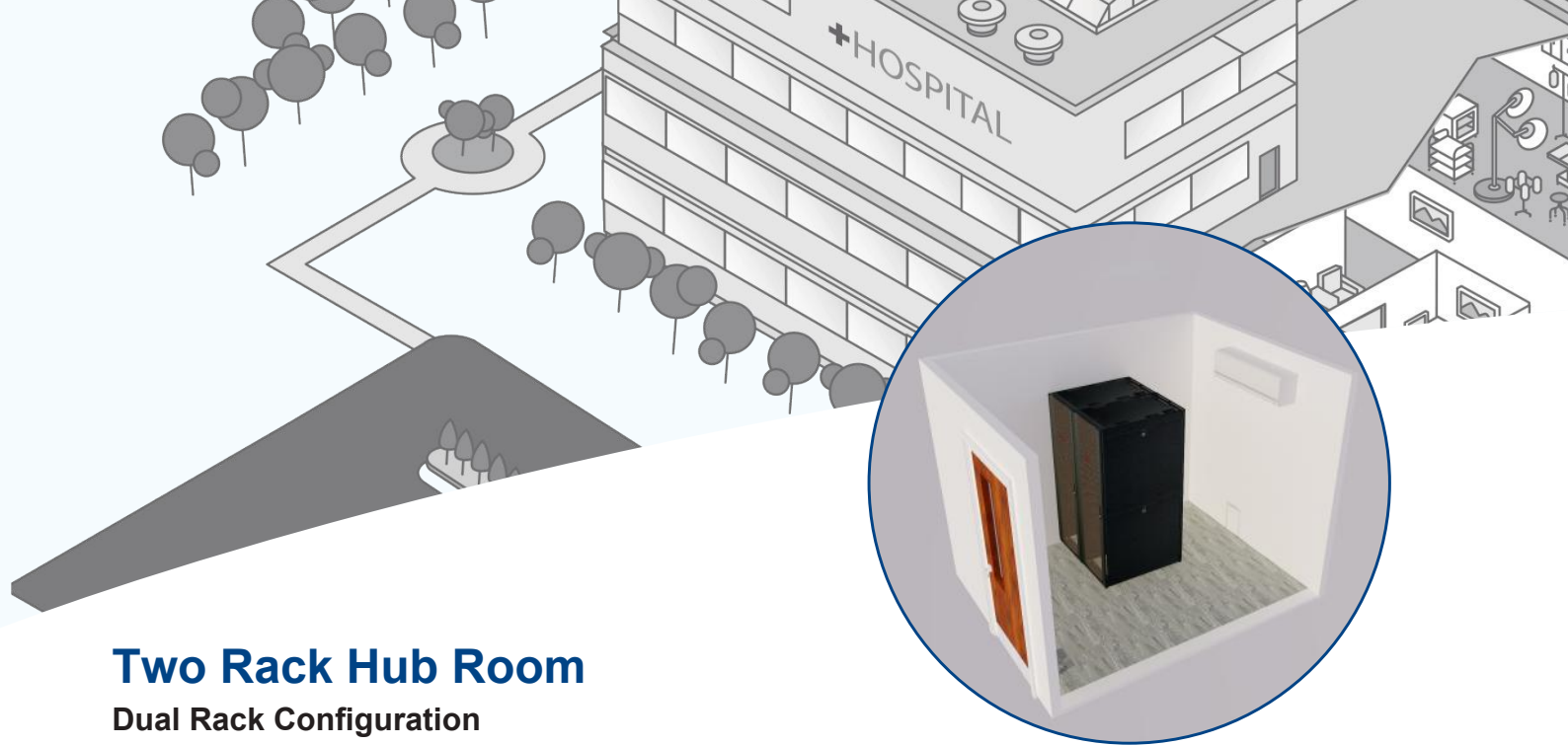
Enhanced Hub Room Key Features

- N+1 Power & Cooling
- Pre-Configured Solution
- Quick Deployment and Installation
- Space Saving Solution
- Premium Rack with vendor-neutral mounting for guaranteed compatibility with all EIA-310 compliant 19" equipment
- Modular Online UPS complete with Network Management Card and LCD Control Panel
- Networkable Environmental Monitoring
- Metered Intelligent PDU Strips
- Enhanced cable management accessories to ensure neat cabling within rack
- Easily Scalable should additional rack space be required
- Resilient Solution

Enhanced Hub Room Options

Several design features may be added to the designs, depending on criticality and resilience levels required by the client.

- InRow Cooling
- Switched & Metered by Outlet PDU Strips
- Fire Suppression
- Rack Access Control
- CCTV
- Enhanced Environmental Monitoring
- Wider and/or Deeper Racks



Two Rack Hub Room

Dual Rack Configuration

Description

The Two Rack Hub Room is complete with a 42U racks, UPS, power distribution, environmental monitoring, cable management and cooling, and is compliant to TIA492 standards.

Operational Benefits

- Conformity across all Hub Rooms
- Lowers risk of human error
- Reduced risk of downtime
- Right sized infrastructure leading to better efficiencies
- Lower MTTR in the event of failure
- All key components are networkable meaning infrastructure can be monitored remotely
- Prescribed Fault Alarm notification

Cost Benefits

- Reduced time on-site
- Efficient solution leading to lower operational costs
- No need for consultants – room is pre-designed
- One contractor to manage
- Workspace Technology take full ownership of design and therefore remove risk from PCPS
- Carefully selected products which have low maintenance requirements



Key Features

- Pre-configured solution
- Quick deployment and installation
- Space saving solution
- Rack with vendor-neutral mounting for guaranteed compatibility with all EIA-310 compliant 19" equipment
- Line interactive UPSs (1 per rack) complete with network management card & LCD control panel
- Networkable environmental monitoring
- Carefully selected cable management accessories to ensure neat cabling within rack
- Can easily be scaled upwards should additional rack space be required
- Low risk solution

Options

Several design features may be added to the designs, depending on criticality and resilience levels required by the client.

- N+1 UPS System
- N+1 Cooling
- InRow Cooling
- Intelligent PDU Strips
- Fire Suppression
- Rack Access Control
- CCTV
- Enhanced Environmental Monitoring
- Wider and/or Deeper Racks

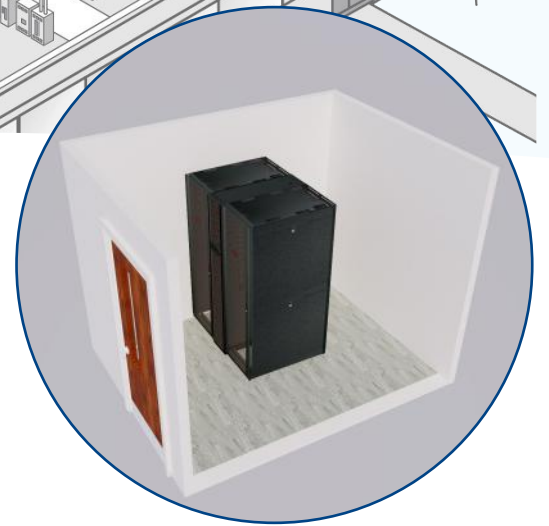


Two Rack Hub Room (Enhanced)

Dual Rack Configuration

Description

The Enhanced Two Rack Hub Room is complete with a 42U premium racks, modular UPS, intelligent power distribution, environmental monitoring, enhanced cable management and cooling, and is compliant to TIA492 standards.



Comparison Chart	Basic	Enhanced
UPS Power		
1x UPS per Rack	✓	✗
Central UPS	✗	✓
Line Interactive UPS	✓	✗
Online UPS	✗	✓
Modular UPS	✗	✓
N+1 Configuration	✗	✓
Networkable	✓	✓
Service Bypass Panel	✗	✓
Rack Mountable	✓	✓
Scalable Runtime	✓	✓
Cooling		
N+1 Arrangement	✗	✓
Networkable	✓	✓
Power Distribution Units		
Metered	✗	✓
Networkable	✗	✓
10A & 16A IEC Outlets	✓	✓
Environmental Monitoring		
Temp Sensors	✓	✓
Temp & Humidity	✓	✓
Leak Detection	✗	✓
Beacon	✓	✓
Racks		
Value Rack	✓	✗
Premium	✗	✓

Enhanced Hub Room Key Features

- N+1 Power & Cooling
- Pre-Configured Solution
- Quick Deployment and Installation
- Space Saving Solution
- Premium Rack with vendor-neutral mounting for guaranteed compatibility with all EIA-310 compliant 19" equipment
- Modular Online UPS complete with Network Management Card and LCD Control Panel
- Networkable Environmental Monitoring
- Metered Intelligent PDU Strips
- Enhanced cable management accessories to ensure neat cabling within rack
- Easily Scalable should additional rack space be required
- Resilient Solution

Enhanced Hub Room Options

Several design features may be added to the designs, depending on criticality and resilience levels required by the client.

- InRow Cooling
- Switched & Metered by Outlet PDU Strips
- Fire Suppression
- Rack Access Control
- CCTV
- Enhanced Environmental Monitoring
- Wider and/or Deeper Racks



Three Rack Hub Room

Triple Rack Configuration

Description

The Three Rack Hub Room is complete with a 42U racks, UPS, power distribution, environmental monitoring, cable management and cooling, and is compliant to TIA492 standards.

Operational Benefits

- Conformity across all Hub Rooms
- Lowers risk of human error
- Reduced risk of downtime
- Right sized infrastructure leading to better efficiencies
- Lower MTTR in the event of failure
- All key components are networkable meaning infrastructure can be monitored remotely
- Prescribed Fault Alarm notification

Cost Benefits

- Reduced time on-site
- Efficient solution leading to lower operational costs
- No need for consultants – room is pre-designed
- One contractor to manage
- Workspace Technology take full ownership of design and therefore remove risk from PCPS
- Carefully selected products which have low maintenance requirements



Key Features

- Pre-configured solution
- Quick deployment and installation
- Space saving solution
- Rack with vendor-neutral mounting for guaranteed compatibility with all EIA-310 compliant 19" equipment
- Line interactive UPSs (1 per rack) complete with network management card & LCD control panel
- Networkable environmental monitoring
- Carefully selected cable management accessories to ensure neat cabling within rack
- Can easily be scaled upwards should additional rack space be required
- Low risk solution

Options

Several design features may be added to the designs, depending on criticality and resilience levels required by the client.

- N+1 UPS System
- N+1 Cooling
- InRow Cooling
- Intelligent PDU Strips
- Fire Suppression
- Rack Access Control
- CCTV
- Enhanced Environmental Monitoring
- Wider and/or Deeper Racks

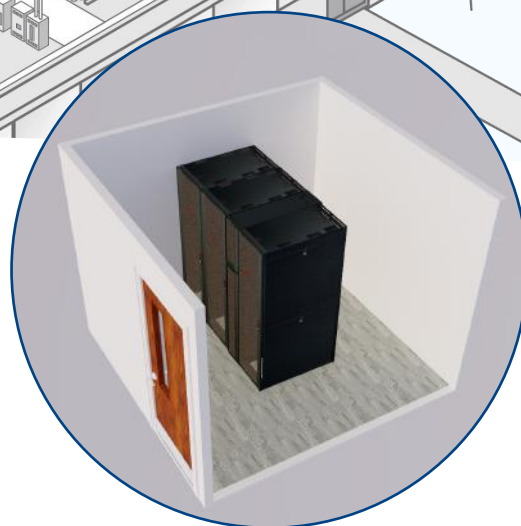


Three Rack Hub Room (Enhanced)

Triple Rack Configuration

Description

The Enhanced Three Rack Hub Room is complete with a 42U premium racks, modular UPSs, intelligent power distribution, environmental monitoring, enhanced cable management and cooling, and is compliant to TIA492 standards.



Comparison Chart	Basic	Enhanced
UPS Power		
1x UPS per Rack	✓	✗
Central UPS	✗	✓
Line Interactive UPS	✓	✗
Online UPS	✗	✓
Modular UPS	✗	✓
N+1 Configuration	✗	✓
Networkable	✓	✓
Service Bypass Panel	✗	✓
Rack Mountable	✓	✓
Scalable Runtime	✓	✓
Cooling		
N+1 Arrangement	✗	✓
Networkable	✓	✓
Power Distribution Units		
Metered	✗	✓
Networkable	✗	✓
10A & 16A IEC Outlets	✓	✓
Environmental Monitoring		
Temp Sensors	✓	✓
Temp & Humidity	✓	✓
Leak Detection	✗	✓
Beacon	✓	✓
Racks		
Value Rack	✓	✗
Premium	✗	✓

Enhanced Hub Room Key Features

- N+1 Power & Cooling
- Pre-Configured Solution
- Quick Deployment and Installation
- Space Saving Solution
- Premium Rack with vendor-neutral mounting for guaranteed compatibility with all EIA-310 compliant 19" equipment
- Modular Online UPS complete with Network Management Card and LCD Control Panel
- Networkable Environmental Monitoring
- Metered Intelligent PDU Strips
- Enhanced cable management accessories to ensure neat cabling within rack
- Easily Scalable should additional rack space be required
- Resilient Solution

Enhanced Hub Room Options

Several design features may be added to the designs, depending on criticality and resilience levels required by the client.

- InRow Cooling
- Switched & Metered by Outlet PDU Strips
- Fire Suppression
- Rack Access Control
- CCTV
- Enhanced Environmental Monitoring
- Wider and/or Deeper Racks



Data Centre Solutions Expertly Engineered

Workspace Technology Limited

Unit 10, Reddicap Trading Estate
Sutton Coldfield, West Midlands B75 7BU

Tel : 0121 354 4894

Fax: 0121 354 6447

Email: sales@workspace-technology.com

www.workspace-technology.com

www.mobiledatacentre.com



Interested in finding out more?

Our friendly team are on hand to take your call on **0121 354 4894**
or send us an email at sales@workspace-technology.com