

APC Elite Partner



APC by Schneider Electric Elite Data Centre Partner

APC's leading "Elite" Data Centre Solutions Partner providing clients with expert advice, integration and support for APC's leading range of racks, power, cooling, monitoring and management technology.



Data Centre Solutions Expertly Engineered



Workspace Technology's contemporary approach to data centre infrastructure uniquely positions the company to expertly manage and deliver APC by Schneider Electric products, certification and services to clients across the UK.



APC by Schneider Electric Elite Data Centre Partner

As an "Elite" participant in APC's partner programme, Workspace Technology, provide exceptional levels of service and expertise helping clients to resolve comms room, server room and data centre design requirements and challenges across a broad spectrum of infrastructure technology including; power, cooling and management.

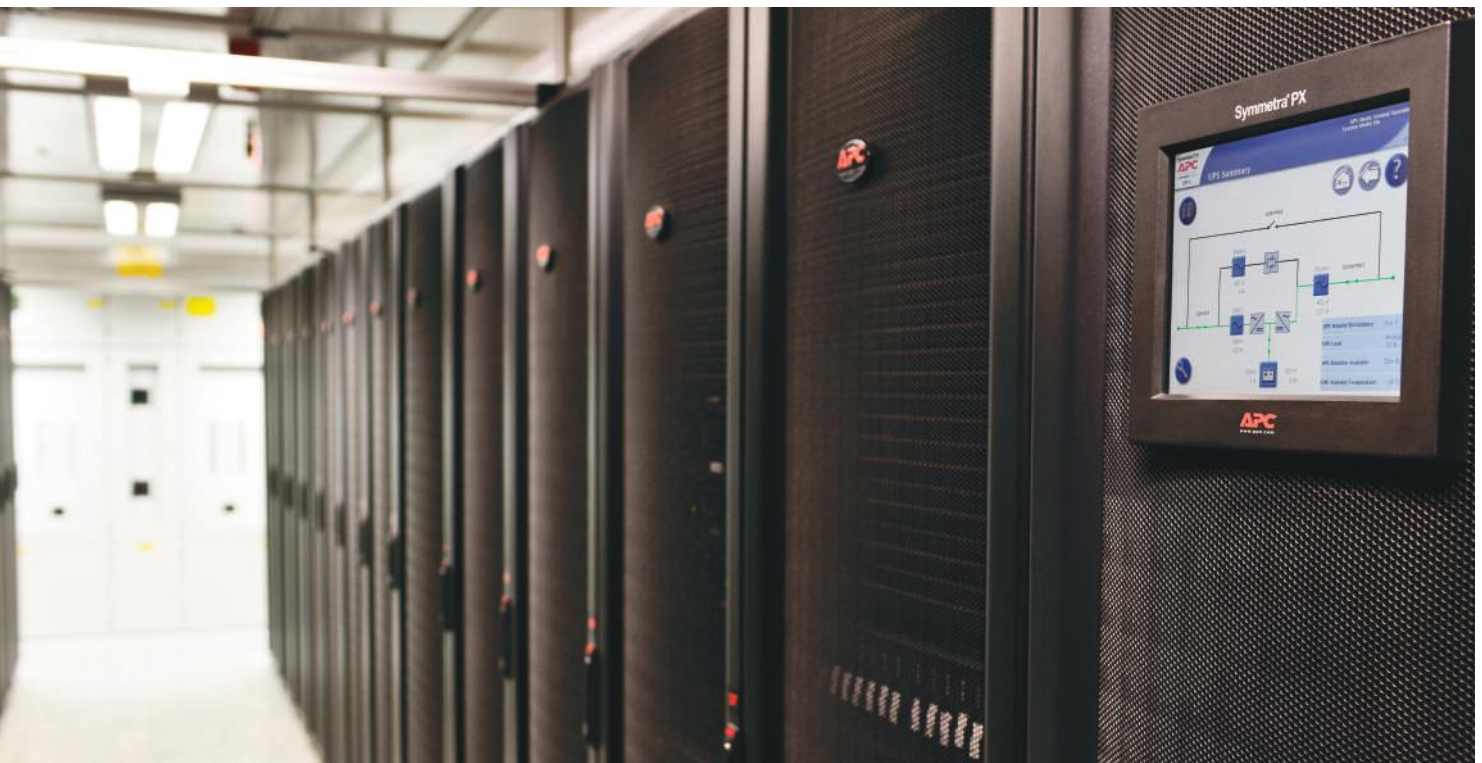
As an APC Elite Partner Workspace Technology ensures clients achieve full access to qualified and dedicated solution engineers, and ongoing support, technical information and visibility to the new and fast moving developments within the wiring closet, server room and data centre infrastructure environment.

APC Product Integration

Workspace Technology seamlessly integrate APC's range of power, cooling and management products as part of our strategy to provide clients with effective energy efficient data centre solutions base on "Best Practice" data centre design principles.

Workspace Technology has successfully integrated APC's technology within data centre design and build projects for public sector and corporate clients across the UK.





Equipment Racks and PDUs

NetShelter SX Racks

Workspace Technology recommends and implements APC NetShelter SX range of equipment racks designed to provide a reliable vendor neutral rack environment for mission critical equipment. With a strong focus on cooling, power distribution, cable management and environmental monitoring, the NetShelter SX offers our clients with excellent high quality racking systems.

Rack Power Distribution Units

The growing complexity of IT environments, has increased the need for reliable power distribution to the rack level. Eliminating power management issues is essential for IT and Facilities Managers to maintain system availability. Power Distribution Units are an essential element in managing power capacity and functionality for critical network, server and data centre equipment.

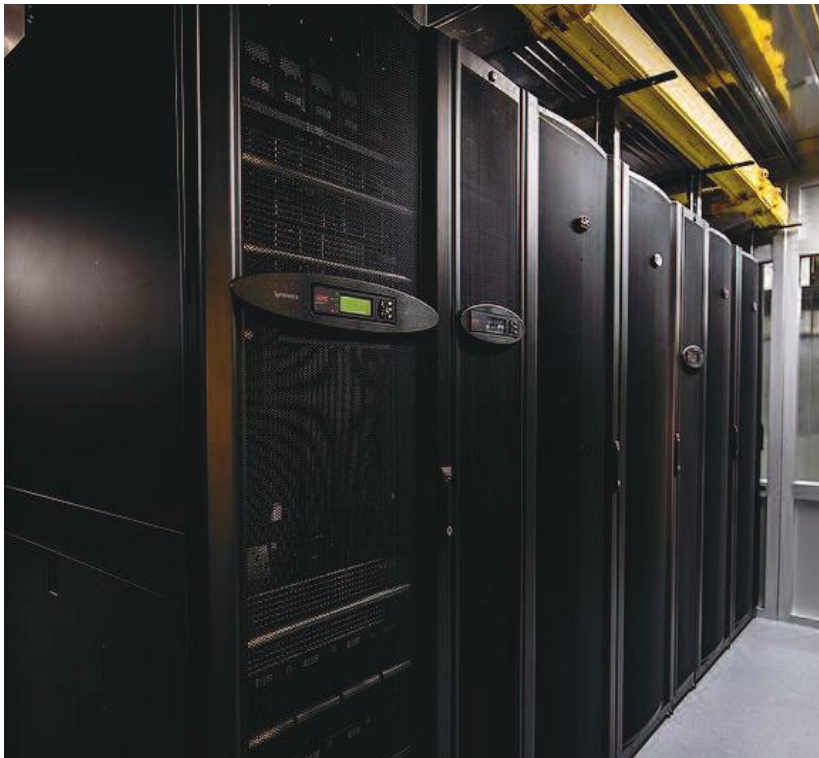
Workspace Technology provides a wide array of power distribution solutions for your IT environment. Our product of choice is APC's standardised PDUs designed to increase the manageability and efficiency of your data centre.

Power Distribution solutions provide real-time remote load monitoring of connected equipment and individual outlet power control for remote power recycling, manage power-up or power-down sequencing of equipment. IT and Data Centre Managers rely on APC PDU alarms to warn of potential power overloads before critical IT failures occur.

Workspace Technology will recommend and implement the most appropriate PDU to suit client specific applications and availability.

Options include :-

- **Basic PDUs**
Reliable Rack power distribution
- **Metered Rack PDU**
Real time monitoring of critical loads
- **Switched Rack PDU**
Controlled on/off switching of individual outlets



UPS Systems

Workspace Technology integrates APC's comprehensive range of both single phase and three phase electronic UPS systems and accessories to back up individual client demands.

Product options range from Smart UPS to high capacity, modular rack format Symmetra PX UPS systems which are the product of choice for later server room and data centre environments.

Symmetra® PX

The APC Symmetra PX is a world-class, redundant, scalable, power protection system designed to cost effectively provide high levels of availability and backup. Seamlessly integrating into today's state-of-the-art data centre designs, the Symmetra PX is a true modular system. Made up of dedicated and redundant modules; power, intelligence, battery and bypass, all engineered into a design that is easily and efficiently serviceable, this architecture can scale power and runtime as demand grows or as higher levels of availability across a network are required.

Workspace Technology deploy Symmetra PX technology as part of our strategy to implement contemporary distributed right size power "zones" within server room and data centre facilities. Highly manageable, the Symmetra PX features self-diagnostic capabilities and standardised modules which mitigate the risk of human error resulting in increased overall data centre reliability.

As an APC Elite Data Centre partner, Workspace Technology provides full design and integration along with helpful support and information for the Symmetra® PX UPS system.





Cooling

Workspace Technology provides APC InRow InfraStruXure computer room air conditioning as part of its comprehensive server room and data centre infrastructure services.

Based on the principle of moving the cooling unit closer to the source of heat generation, InRow computer room air conditioning technology by APC provides energy efficient cooling for server room, computer room and data centre environments. The APC InRow design helps eliminate air mixing and provides a predictable cooling architecture.

The InRow computer room air-conditioning system is placed in-line with server equipment racks and air is drawn in through the rear of the unit, cooled, and discharged into the cold aisle where electronic equipment air inlets are located.

A complete range of InRow systems are available to suit many configurations including:

InRow RC - Row-based, chilled water cooling solutions for medium to large data centres including high density applications.

InRow RD – Row-based, direct expansion cooling solutions for wiring closets, server rooms, and data centres.

InRow RP – Row-based precision cooling solutions for medium to large data centres including high density applications.

InRow SC – Rapidly deployable, self-contained row-based cooling solutions for server rooms and wiring closets.

Workspace Technology will assess individual room requirements to make air conditioning design recommendations.



Environmental Monitoring & Management

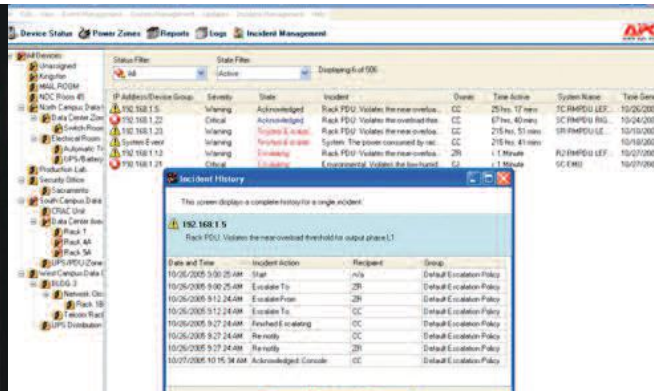
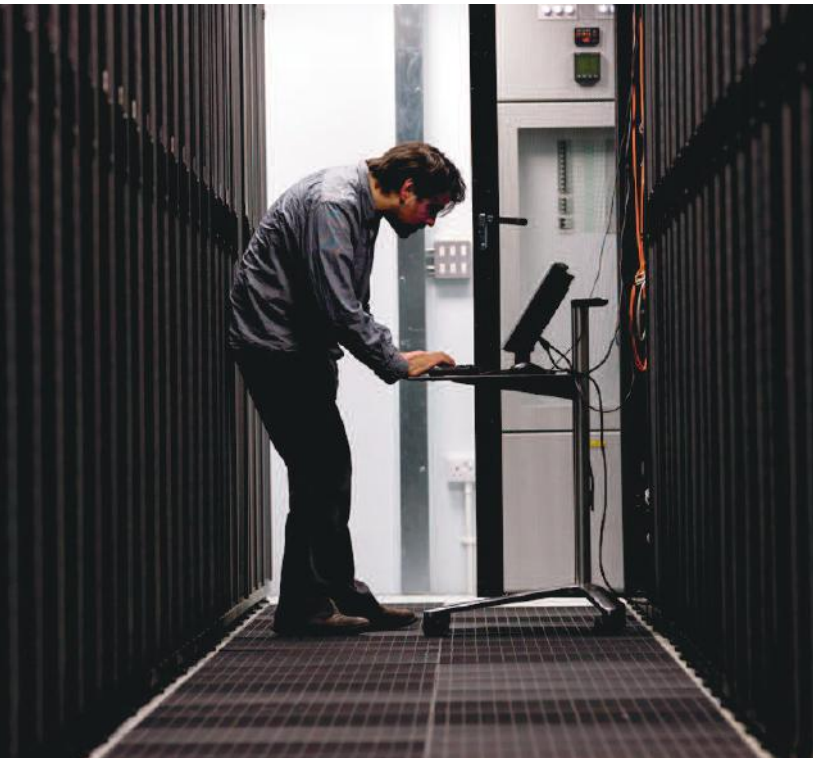
The ability to alert a business to disasters or potential performance issues at the earliest moment is paramount. If a business can prevent a disaster or the occurrence of 'over capacity', it can safeguard against associated disruptions such as waiting for replacement systems or relocating staff to a recovery centre. The management and monitoring of systems is essential to insuring continued availability and performance during the lifecycle of any Server Room or Data Centre Infrastructure.

Workspace Technology's Management & Monitoring Strategy is based on APC's leading InfrastruXure Central and Netbotz environmental monitoring technology. We work with clients to provide detailed management strategies which encompass the complete data centre environment.

Netbotz

APC's NetBotz offers a range of premium security and environmental monitoring capable of video surveillance, temperature, humidity, door contact, dry contact, vibration, smoke, 2-way audio monitoring, spot leak and rope leak monitoring. This scalable suite of networked appliances, sensors, access controls and cameras is designed to safeguard environments ranging in size from network closets to data centres. Workspace Technology integrate volt free contact and output relays via a structured cabling system, to create a truly flexible and comprehensive environmental monitoring solution for clients across the UK.

InfrastruXure



InfraStruXure Central

A vendor-neutral, scalable monitoring system which collects, organises, and distributes critical alerts, surveillance video and key information, providing a unified view of complex physical infrastructure environments from anywhere on the network.

InfraStruXure Central provides an efficient way for organisations to monitor their company wide multi-vendor physical infrastructure; power, cooling, security, and environment. Real-time monitoring, user-defined reports and graphs, and instant fault notification and escalation enable quick assessment and resolution of critical infrastructure events that can adversely affect IT system availability. This centralised repository of critical information can be accessed by multiple users from anywhere on the network, creating a consolidated view of the physical infrastructure. This open and flexible architecture expands with changing business needs through additional device licenses, add-on surveillance, capacity management and change management modules, and through integration with enterprise and building management systems.

InfraStruXure® Management Software:-

InfraStruXure Operations - Instant overview of data centre operations through inventory management, PUE calculator, real-time device alarms, and location-based drill-down.

InfraStruXure Capacity - Planning and optimising utilisation of actual physical infrastructure capacities via shared data centre model, enabling efficient equipment provisioning and right-sizing of your data centre.

InfraStruXure Change - Workflow management allows for easily tracking and executing moves, adds and changes of equipment in the data centre.

InfraStruXure Energy Cost - Cost analysis of energy use on a kW/h basis, detailed to the rack level, for calculating cost of energy consumption for specified equipment and aid in charge-back and efficient budgeting.

Independent Integration

Workspace Technology's vendor neutral approach to the design and build of data centre and server room environments ensure that we only offer 'best fit' technology for individual client requirements. APC Elite partner status ensures Workspace Technology has full access to a range of world leading data centre technology backed by Schneider Electric's global presence and capability.

About Workspace Technology

Workspace Technology provides expert data centre, communications and server room solutions and services for public sector and corporate clients across the UK.

Workspace Technology is proud to be an approved “Endorser” for the European Commissions “Code of Conduct for Data Centre Efficiency” Workspace Technology is committed to help clients reduce their carbon footprint through the deployment of “Best Practice” energy efficient technology and design, for new and existing data centre environments.

Further details of Workspace Technology’s products and services can be found at www.workspace-technology.com.



Workspace Technology Limited

Unit 10, Reddicap Trading Estate, Sutton Coldfield,
West Midlands, B75 7BU

Tel : 0121 354 4894

Fax: 0121 354 6447

email: sales@workspace-technology.com

www.workspace-technology.com